

Please read and follow the instructions carefully. You may also scan the QR code below to view the operation video:



Scan the QR code to download the app



Equipment Operation Video

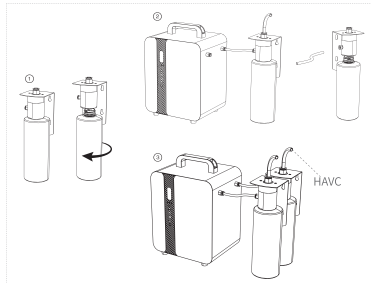


Equipment after-sales Video

PRODUCT INFORMATION		
Size: 247×179×320mm	Weight: 8.6Kg	Power: 26W
Input: AC 110V/220V	Capacity: 2×1000ml	Coverage: 10000m ³

1 INSTALLATION

Screw out the essential oil bottle, add the essential oil, and then reattach it to the atomizer head. Connect one end of the small outer tube to the interface on the right side of the device and the other end to the interface on the side of the atomizer head. Connect the medium-sized outer tube to the top of the atomizer head and the outlet position of the HVAC.

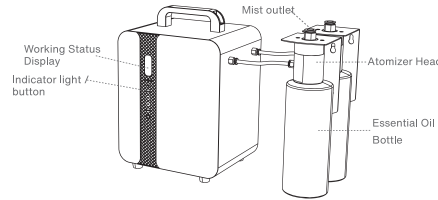


WARNING: After adding essential oil, the device must always be kept upright and facing upwards. It should not be inverted or tilted, as this may damage the internal components of the device.

01

WHAT'S INCLUDED			

2 BUTTON CONTROL



◆ Sound prompt

The device emits a "beep" when receiving signals or upon any valid button operation.

◆ Factory Reset

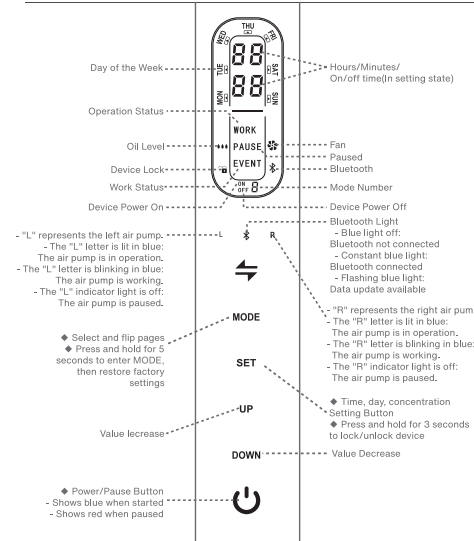
Long - press the MODE button for 5 seconds to restore the factory settings, and the buzzer will sound three times.

Factory - set parameters: 60 seconds on, 200 seconds off, operating time Monday to Sunday from 08:00 to 22:00.

◆ **Button Lock** | Press and hold the SET button for 3 seconds to toggle button lock/unlock, and the buzzer will sound three times.

02

◆ Power/Ambient Light Button



◆ system time settings

-Press the [SET] button for the first time to enter the hour setting. The hour digits will flash, adjust the hour time by pressing the [UP/DOWN] buttons.

-Press the [SET] button for the second time, the hour is confirmed and set, and move to the minute setting. The minute digits will flash, adjust the minute time by pressing the [UP/DOWN] buttons.

-Press the [SET] button for the third time, the minute is confirmed and set,

03

and move to the workday setting. The workday digits will flash, adjust the workday time by pressing the [UP/DOWN] buttons.

-Press the [SET] button for the fourth time, confirm that the system time setting is complete.

◆ working mode settings

A First, press the [MODE] button, the LCD display shows the factory setting time, this machine can set 5 working modes. For example: set 8 am-10 am, 11 am-12 pm, 1 pm-2 pm. Crossing over 00:00, set two time periods, such as the first period 08:00-23:59, the second period 00:01-06:00.

The first time you press the [SET] button, you enter the start time setting for the first time period, the hour digits flash, and you adjust the hour by pressing the [UP/DOWN] buttons.

Press the [SET] button for the second time, the hour setting is completed. The minute digits flash. Adjust the minute by pressing the [UP/DOWN] buttons.

Upon the third press of the [SET] button, the minute setting is completed, and move to set the work day. Pressing the [UP] button once will display the symbol "▲" at the top of the LCD screen in the day of the week column, indicating that the workday is selected. If "▲" is not displayed, it means it is not selected. Then press [DOWN] to move right and continue setting other day combinations.

B Press the [MODE] button for the second time to set the off time. The first press of the [SET] button enter the setting of hour, adjust the hour by pressing the [UP/DOWN] buttons; the second press of the [SET] button completes the hour setting, and the minute digits begin to blink, adjust the minute by pressing the [UP/DOWN] buttons.

C Press the [MODE] button for the third time to enter the spray duration (intensity setting). Adjust the intensity by pressing the [UP/DOWN] buttons, select the appropriate intensity, with each press adjusting the duration by 5 seconds, the maximum value is 200 seconds, and the minimum value is 5 seconds.

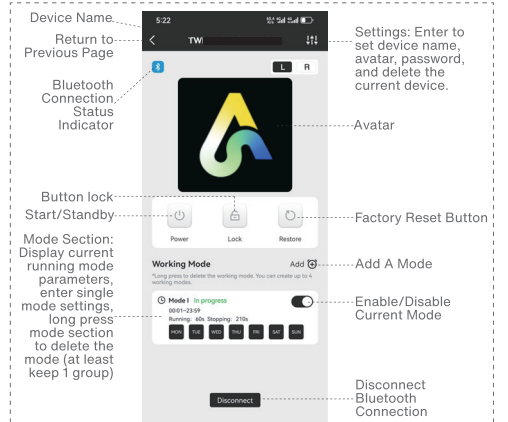
D Press the [MODE] button for the fourth time to enter the pause duration (intensity setting).

Adjust the pause time by pressing the [UP/DOWN] buttons. Each press adjusts the duration by 5 seconds, the maximum value being 600 seconds and the minimum value being 20 seconds.

After setting this, you can enter the next group of mode settings as needed, or you can continue pressing [MODE] to return to the LCD home page if not needed.

04

3 APP CONTROL (BLUETOOTH MODE)



After Bluetooth connection, the device immediately switches to Bluetooth mode and operates according to the Bluetooth settings:

Scan the QR code with your phone to download and install the "Art Diffuser" APP → Go to the page → Select "Start Adding" → Go to the "Search and Connect" page, search for and connect to the device.

Note: It is recommended to allow all APP permissions, including location services, Bluetooth connection, and sending notifications.

◆ **All devices** | Available devices within the phone's Bluetooth range are displayed in the "All Devices" group, click on any device icon to connect to that device, after successful connection, it will jump to the device details page.

05

◆ **My Devices** | Devices that have been connected are displayed in the "My Devices" group, devices not currently within Bluetooth range are shown in gray.

◆ **Device Status Page:**

☐ Channel: Select to activate either the left (L) or right (R) running channel, or work with both channels running at the same time.

⏻ Toggle: The phone can turn the device's operating status on/off with one click.

🔒 Button's lock: Turn on/off the button's lock.

🔄 Factory Reset: The phone can reset to factory settings with one click.

◆ **Working Mode**

Click "Add" to create up to 5 working modes, click the switch button in the upper right corner of the mode window to turn the mode on/off, long press the mode window to select delete mode, click the mode window to customize and edit days of the week, time periods, and frequency.

-**Day Setting** | Select the desired days.

-**Time Period Setting** | Adjust the dial to select the working time period.

Note: If the time period needs to cross 00:00, it must be set as two consecutive time periods (the end time cannot be less than the start time), for example, 23:00~02:00, set as two groups: 23:00~23:59, 00:00~02:00.

-**Frequency Setting** | Adjust the dial to select the working frequency.

Operating time range: 1~30s; Pause time range: 60~500s.

4 CONCENTRATION & CONSUMPTION

Grade	On time(s)	Pause time(s)	Consumption (g/h)
Minimum concentration	5s	600s	0.07
Medium concentration	100s	300s	2.12
Maximum concentration	200s	20s	7.69
100% Text	Continuous On	0	8.46

Note: The data is for reference only. The amount of mist produced by different essential oils may vary. The data above is based on the essential oil used in the test: Park Hyatt (density ≥ 0.95).

5 MAINTENANCE AND UPKEEP

Scent diffusers require regular cleaning and maintenance every 1-2 months when in normal use. Below is the method for cleaning.

◆ **Spray nozzle cleaning**

* Use 95% "alcohol + cotton swab" to gently wipe the nozzle, removing the residue of essential oil liquefaction

* Cleaning the atomizer core can be cleaned by soaking a cotton swab in 95% alcohol and wiping the core with it, or by soaking the atomizer core in alcohol and then allowing it to dry.

◆ **Oil bottle cleaning**

* Before changing essential oils each time, clean the oil bottle with alcohol and allow it to dry completely.

When equipment is not used for a long period, it is necessary to clean the internal nozzles and other components thoroughly.

* Add 95% industrial alcohol to the empty bottle.

* Turn on the device and run it for 10-15 minutes.

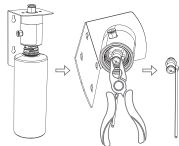
* Turn off the device, pour out the alcohol from the bottle and let it dry before reassembling the device.

* Power off storage, unplug the power supply, to prevent electrostatic damage to the circuit.

6 REPLACE THE ATOMIZER CORE

The atomizer head assembly is divided into: atomizer head, essential oil bottle, oil suction tube, filter and atomizer core.

Operation steps: First, unscrew the essential oil bottle, pull out the oil suction tube, and remove the atomizer cover with a holding tool like tweezers. The white part on top is the atomizer core. Wipe the essential oil dry with a dry cloth, then pinch the atomizer core and unscrew it to the right to remove it. Next, replace it with a new atomizer core, and then reassemble all parts back into the device.



Hint: Please pay attention to aligning the oil tube with the atomizer core hole inside the atomizer cover when reinserting it, and ensure all components are tightened to prevent detachment.

7 WARRANTY POLICY

◆ **Replacement/Maintenance is guaranteed for one year from the date of purchase.**

If you need to replace components for free within the warranty period, the device must be under normal use conditions and the failure must be due to manufacturing reasons to provide warranty. During the warranty period, component fees covered by the warranty are waived. This warranty does not include consumables such as oil. To obtain warranty service, please be sure to contact the after-sales department during the warranty period and present the original or copy of the valid warranty card and the official commercial invoice to the relevant departments.

◆ **The following situations do not enjoy free warranty service**

- ① Damage & problems caused by Accidents & Fire!
- ② Not used properly and wrong operation.
- ③ Repaired by non-professionals, causing some parts damaged.
- ④ Damaged during transportation.
- ⑤ Without our warranty card.
- ⑥ Without proper cleaning for a long time.
- ⑦ The machine is overworked.
- ⑧ Machines & Parts not from us.
- ⑨ Machines not purchased from official channels.
- ⑩ Send the machines back without permit from the manufacturer.



SAFETY PRECAUTIONS FOR USE

◆ **Safe use**

① After loading the essential oil, the device must always remain upright and facing upwards, not inverted or tilted, otherwise it may damage the internal components of the device.

② During the transportation of the equipment, it is necessary to empty the essential oils from the bottles to avoid oil leakage and damage to the equipment.

③ This device cannot be used for air humidification and cannot be filled with water;

④ Please place it in a location inaccessible to children and pets.

⑤ Store in a dry and cool place, do not use this device in high temperature or humid environments.

◆ **Forbidden**

① Do not cover the equipment in use.

② Prohibit the use of overloaded power outlets, power cords, or damaged power plugs, as this may damage equipment or even cause fires.

③ Essential oils should not be ingested and should be kept away from contact with the eyes. In case of eye contact, rinse thoroughly with plenty of water; if there is a strong sensation, seek medical attention immediately.

④ Please do not disassemble the equipment. If any abnormalities are found in the product, please contact us promptly.

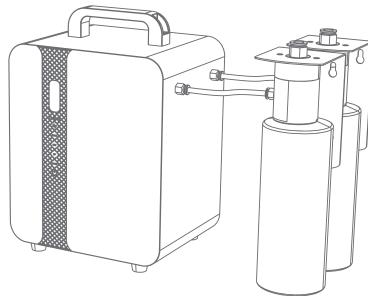
User Manual



Smart Dual Air Pump Scent Diffuser

Screen Version

Scent machine



[Please read the manual carefully before use and keep it properly]